

Nileperch safari Egypt

Area

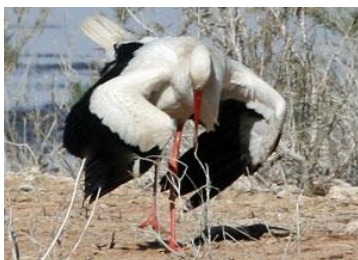
The Nile. The most important river of Egypt and maybe also in all of Africa. The construction of the Aswan dam in the '60s created the gigantic Lake Nasser. This lake is 550 kilometres long and 35 kilometres wide at its widest point. With a total surface area of more than 5000 km² a special ecosystem has been created which provides a home to a large and special diversity of animals and plants.



The Nile is of great importance to the region. The river is the most important lifeline of the country. In earlier years, the river flooded annually and left fertile silt on the river banks on which the farmers could grow their crops in the coming year. Virtually all major cities in Egypt are therefore connected to the Nile to a greater or lesser extent. This is also the reason that along the Nile beautiful nature but also ancient ruins and temples can be found. All in all an adventure to behold.



In Lake Nasser a number of descendant crocodiles that were also present during the time of the pharaohs still live here. Furthermore, there is a wide variety of birds such as storks, marabou, blue and silver heron, Nile geese, pelicans, flamingos etc. All in all about 150 species offer a true spectacle and contribute to the Hemmingway feeling during this beautiful and adventurous fishing trip.





Boats

Our local partner has been carrying out these special fishing safaris for over 20 years and knows better than anyone else how to find the right fishing spots at the right time. To reach these places we use 4 different types of boats.

1. The mother boat. In total there are four mother boats at your disposal. These boats have the necessary provisions, supplies, fuel and personnel on board to guarantee a comfortable stay. The boats are equipped with a built-in kitchen, dining area and there is more than enough space on the upper deck to enjoy the beautiful view. There is 240 V on board by means of a generator and there is a satellite telephone on board if there is an urgent need for communication. You will be amazed by the meals served in the middle of the desert on the Nile in a mix of western and Nubian style.



2. The houseboat. These boats have two separate sleeping cabins for 2 persons each and with 2 extra places on top of the sundeck they can accommodate a maximum of 6 persons. They are equipped with a toilet & shower and there is a practical kitchenette on board. There is also electricity via a generator. In the evening there is light available via a 12 V battery. On the sundeck there is enough shade to relax and eat. This type of boat is ideal to get into the shallower areas and see 'wildlife'. This option is ideal in combination with a few fishing boats for a private safari.



3. The fishing boat. These boats have two sections. The living part and the fishing part. The open fore and aft deck offers a perfect place to cast or troll. The boat offers ample space for 2 persons and a 3rd person is possible. Within the framework of a private safari, the houseboat in combination with 2 or 3 fishing boats is a perfect combination.



4. The monark. These boats are only for fishing and are used for 2 anglers together with a guide. They are faster and smaller and therefore offer a little more access to shallower areas for casting. You can also approach locations almost silently and they have the advantage that they are light and drift well.





To carry out this trip there are two different types of safari.

1. Group safaris

The group safaris leave every Monday and are open to fishermen from all over the world. So in this setting it can happen that you are on a mother boat with American, English or French fishermen. From the fishing boats there will be daily fishing in small groups. In the evening everyone comes back to the mother boat where they eat and all stories are told about this fishing day. And that of course while enjoying a drink and a delicious meal on the shaded topdeck.



2. Private safaris

The private safaris are also known as 'Nubian Safari'. This fishing trip depends on the wishes of the guest. How long do you want to fish and with how many people? For example, you can travel with a group of 4 to 6 people on a house boat and go fishing daily from a fishing boat and two monarchs. Or you can go fishing with your own mother boat when the group is a bit larger and with several fishing boats. Depending on your wishes we can make a tailor made fishing trip. Private safaris are possible from 2 persons and more.



Fishing

Fishing is based on catch & release. Occasionally a poorly hooked Nile perch is also presented during the evening meal. But that is an exception.



Fishing is mainly focussed on the Nile perch. This large and strong fish has, except for the crocodile, no natural enemies. The largest Nile perch ever caught by a local fisherman was no less than 392 lbs (= 176 kilo). The camp record stands at a respectable 250 + lbs. In lakes, the Nile perch is on average larger than in river systems, and there are still plenty that justify a fishing trip in the hunt for this largest freshwater fish.

In addition to the Nile perch, the tiger fish is a respectable opponent that can grow up to 20 lbs. They have razor-sharp teeth and are extremely fast. The drills these fish produce are therefore very spectacular. They often hunt in shoals. Once in such a shoal it is often half an hour long feast in which every cast means a fish. With lighter material this is a real impressive experience.



There are 18 different types of catfish in Lake Nasser. The two most important ones are the Vundu and Bagrus catfish. They are both caught during trolling but often also with bait from the shore. It is important not to cast your bait too far. They come in shallow water looking for stranded food or dead fish. In deep water your bait will only sink into the high underwater plants. This fishing is best done in the evening after a day of fishing from the boat. But also at lunchtime, setting out a fishing rod for the catfish regularly leads to results.

As a bait SMAC (canned meat) is used, which is dried in the air when opened and thus stays on the hook better. Together with a good oil / scent these are great items to bring from home and catch a catfish or two in the evening. Both types of catfish grow up to 50 to 70 lbs and give a great drill that you won't easily forget under the stars in Egypt.



Vundu



Bagrus

The Tilapia is a collective name for more than 100 species of cichlids, two of which are common in Lake Nasser. They grow up to 6 lbs and grow fast. On Lake Nasser this is the main source of income for the local fishermen but at the same time the most important food for the Nile perch. They are little caught by rod but sometimes they catch a small spinner / blinker.

What can you expect from a week's fishing? Fishing is not catching. That is one thing for sure. But most anglers catch a 50+ lbs Nile perch. Anything is possible up there, but simply happens less often. There are days when nothing is caught and there are days when you catch 15 in different sizes. It is not like in other locations that the fish are easy to catch. Here your qualities as an angler are addressed. If you go for the larger ones you catch less and if you go for smaller ones you catch more.

There are two ways of fishing:

1. Trolling

Trolling is most productive because you simply fish the most miles with your lure. The rods are held in the hand because it gives more control over the rod. Especially when the strike comes from a really big Nile perch that is necessary to properly set the hook and control the fish from the first moment. Besides that you can let the bait move more. There are mainly trolling along the coast at different depths.

2. Casting from the shore

Besides trolling, this is also a very productive way of fishing and we have plenty of coastal fishing. Bring a pair of good sneakers or sandals with grip. Sometimes you really have to scramble over rocks and stones and then flip-flops really are not the best option. Also keep in mind that Nile perches are shy. Try fishing in inconspicuous clothing with camouflage and not in your bright yellow t-shirt. Furthermore, it is important to move slowly and quietly, so that you are not visible to the fish.

If you see a Nile perch swimming along the coast, don't cast the lure directly in front of its mouth as this will scare it off and it will swim away. Make sure that you cast the lure at a distance of about 4 to 5 meters and then reel it in sideways to the fish. The fish are shy and learn from previous experiences.

Types of bait:

Softbaits: (Rubber / Shads / Twisters)

Fishing for the Nile perch has become more challenging over the years. One of the reasons is the 'catch & release' rule that has been applied for many years. The fish 'learn' more and more and they avoid the noisy boats and the careless coastal fishermen.

Softbaits are the newest bait species with which relatively little has been fished so far. Sizes from 15 centimetres and bigger are used. Disadvantage of this bait is that the tigerfish love it and like to use their 'teeth'. And when a tigerfish puts its teeth in it, after a while not much is left from your bait. It is therefore also advisable to bring a candle, glue and lighter to be able to stick, melt or glue them back together again in the evening. In this way you will be able to face it the next day with fresh courage.



Dead bait

Small tigerfish or Alestes (Arabic sardines) are used. But they are not easy to catch. The tigerfish can be caught with small blinkers (Meps). To obtain the Alestes, it is best to turn to the local fishermen. To catch them yourself you need small hooks 12 or 14/0 and a piece of bread. They can often be found in the vicinity of the mother boats.

Live bait

This is rarely used because it is only allowed in a few places and it is also difficult to keep the fish alive. There are no special tanks in which you can keep the fish and that makes keeping them alive difficult in practice. Possibly you can fish from the coast with a small blinker to catch a tiger fish and then attach it to a prepared heavier rod. In this way it is possible to offer freshly caught live bait.

Static fishing

When fishing for catfish it is wise to bring a small bite alarm system. This way you can continue fishing while sleeping. Dead bait and dried SMAC in bite-sized chunks are used.

On the mother ships there is only a limited supply of softbaits and other lures available so bring enough yourself.



Hardbaits

Don't underestimate the power of the Nile perch when it comes to choosing the right lure! Practically all standard lures are no match for the power of the fish. It is therefore important to replace the standard splitrings and hooks with high quality alternatives. Think of brands like Gamakatsu and Owner. If you don't, there is a very high chance of bent hooks, torn split rings and eventually lost fish. It is very important to make your lure 'Nile perch proof'.



In winter the emphasis is on the more deep running crankbaits because the Nile perches are in deeper water and in summer the shallow running crankbaits are better used. It is also important to take different species with you. There are days when one type is doing very well and the other is not. By having a choice of different types of lures you increase your chances.

The lures below are recommended to use. The degree of importance / level to catch is indicated by the number of stars. The more, the better.

Depthriders' ***** are the most successful species to date in Egypt. They are difficult to obtain in Europe but if you want we can order them for you in advance and they will be ready for you on the boat at the start of your fishing safari. This is because our local partner has been able to obtain a large stock of these lures. The costs are € 20,- each

Look alike shads'*****

Bucher Depth Raider, straight & jointed ****

Rapala Super Shad Rap SSR ****

Musky Big & Little Ernie ***

Rapala X-Rap Magnum ***

Rapala X-Rap Jointed Shad**

Rapala Magnum CD 14, 18 & 22**

Russellures 6.5 inch **

Manns Stretch 15+ & 20+**

Manns Stretch Imitator Junior **

Halco Sorcerer 150 - Crazy Deep **



Blinkers with single hooks are recommended for fishing for tigerfish. For example the Meps #0 #2 and #3 in gold and silver. But also small lures are effective in striking colours.

Material

For trolling it is recommended to use boat or up tide rods in the class 20 to 30 lbs with a length varying from 2.2 to 2.5 metres. A reel such as a TLD 15 or 20, ABU 7000 or Penn GLS 25 with a minimum of 200 meters of braided line of around 20 kilo breaking strength.

As a leader a 100 lbs fluocarbon with corresponding swivel with ball bearing of around 200 lbs is used.

For casting from shore the whole set up may be slightly less heavy and to get the right distance in the cast slightly longer rods are advised. Approximately 2.5 to 3 meters of rods in the category of 150 to 250 grams casting weight. Together with a sturdy reel or baitcaster with at least 200 metres of braided line of 15 kilos breaking strength offers a good combination. The leader is fluocarbon with 70 lbs and the swivels between 100 and 150 lbs.

For tigerfish and smaller Nile perch, a medium spinning rod is sufficient with reel and braided line of 10 kilo breaking strength. For the tigerfish a steel trace of 20 to 30 lbs is necessary.

There is no spare line available on the boats. It is therefore wise to bring extra line yourself in case you lose too much line in between.

If you don't have the right materials it is also possible to rent a complete set. You don't have to bring anything with you and you can hop on the boat just like that.

Regular:

Two rods for trolling and castin. One rod with multiplier reel, an extensive lure box and a spinning rod with regular reel. Rental price per day is € 30,-.

Specialist:

Two rods to troll and cast with Shimano Calcutta reels TE 700 and TE 400, an extended lure box and a spinning rod with reell. Rent is € 35,- per day.



Lures:

Besides rods it is also possible to rent a full range of lures. The lure box consists of 50 different items with the necessary equipment to fish for catfish such as hooks, swivels etc. Rental price is € 35,- per day.

For all the rental equipment you have to pay for what you lose.



Season / Weather

The Nile perch is caught throughout the year but there are differences per period. Each year the river fills up in a period of 6 to 7 weeks. This rise in water level is caused by rainfall in East Africa and Ethiopia. The exact period is difficult to determine but in general this happens in August and September. During the period of rising water, fishing is slow and difficult. Until the moment the rise has reached its highest point and from that moment on it is 'prime-time' again.

From mid-March until June the Nile perch are in shallow water to chase the spawning Tilapia. The water depths vary from 2 to 5 meters. This is the ideal time to fish from the coast with lures or fly fish. For trolling they often use shallow running crankbaits.

June and July are often good months, but you have to be able to withstand the heat. In these months the temperature rises on average to between 35 and 40° Celcius. Because there is often little fishing and activity in and around the water it is a good fishing period.

From October to March it is a period in which the water level in the lake slowly descends again from the highest level. The larger Nile perch are more in deeper water and are busy to feed for spawning in January and February. During this period, the largest fish are often caught from the shore with deep diving crankbaits and dead bait. The number of fish is slightly less than in summer. Then you really catch more but the average weight is a lower.

For this location it is not necessary to get vaccinated. Only if you come from a yellow fever area you need to vaccinate against it. Hepatitis A and DTP are recommended. However, always check with the your local GP, hospital or healthcare clinic for the latest information.





Travel & Price

You fly to Cairo where you should arrive in the afternoon so at 10.15 pm you fly directly to Aswan where you arrive at 11:30 pm. On the spot you will be met by the local host who will take you to the 4 star Baswa hotel for your first evening. Early in the morning, after a delicious breakfast buffet, you will be picked up again and taken to the boat where you leave around 9.00 am and start your adventure.

If you want to join a group safari, you fly there on Monday and back again on Monday. The last evening you will be brought back to the hotel where you were staying on arrival. On Monday morning you will be picked up early and fly to Cairo at 6.40 am where you will fly back to your home from here.

For the private safaris we use the same flight schedule, but you decide on which day you start and when you go back.

For this trip you will need a visa. Upon arrival in Cairo you can buy this visa at customs for an amount of about € 30,-. You have to do this when you arrive in Cairo.



The cost of the trip is determined by the number of people, the choice/availability of the boats, availability of flight tickets and the length of stay. The prices below are average prices and are therefore subject to change.

The price for joining a group safari with 2 persons is around € 1.600,- per person for a week.

The same group safari with 4 persons on 1 fishing boat and 1 Monark is around € 1.450,- per person.

The guide price for 4 persons as a private safari on a houseboat with two own fishing boats is € 1.600,- per person.

A private safari with 2 persons on 1 fishing boat is around € 2.195,- per person.

The price therefore depends on your own wishes and interpretation of the final fishing safari.





All trips include:

- transport to hotels and fishing boats
- first and last night hotel in Aswan including breakfast buffet
- 6 days fishing accompanied by a guide
- own fishing boat according to group size and type of safari
- all meals; breakfast, lunch and dinner
- stay in cabins on mother/ houseboats depending on the type of safari
- bed linen
- fishing licences
- local taxes and surcharges

Additional costs are; international flights, visa on the spot, drinks, possible rental equipment, possible purchase of equipment, tips, possible surcharge for hotel during Christmas and Easter

Also for these trips there is a lot of service and interaction with the guides, service etc. Tips are generally given to two people. The main waiter who distributes it to the rest and of course your own guide. On average around 20 to 30 euros per person is given to each. Tipping, however, remains a gesture that should take place based on service and personal feeling.

A sheet, pillow and blankets will be provided. It is an idea to bring your own sleeping bag but if you wish you can also rent one. These sleeping bags are washed and need to be ordered in advance. The need for a sleeping bag is mainly in the winter months (November - February) In the summer months it is warm enough and a sleeping bag is not necessary.

Things that are important to bring along:

Sleeping bag, Sunglasses, sun lotion (min. 30 +), lip balm, mosquito repellent, long sleeve T-shirts to protect against the sun, sweater / jacket for the evenings in the winter months, first aid, binoculars, flashlight and batteries, plastic zip pockets for protection of photo / video cameras and a multi standard socket.

Would you like to inquire about the availability of this location or would you like a customized offer, please contact us:

Worldsbestfishingtrips.com
Joe Nieuwenhoff
's Gravensloot 39
3471 BP Kamerik
The Netherlands
E-mail : mail@worldsbestfishingtrips.com
Tel : 0031 – 348 702 620
(CET from 9 to 18.00 hours)

