



2025 ICELAND Sudureyri & Flateyri

**Sailingtime 5 and 15 minutes to open sea!
Less sailing time = more fishing time = less fuel cost**





The trip:

After taking off on Tuesday or Friday afternoon from your domestic airport in Europe, you will land at Reykjavik International Airport at approx. 15.30 hours. In the airport terminal, an Icelandic staff member (English- and German-speaking) will already be waiting to welcome you. The employee can be recognised by the 'Island Pro Travel / Ifiske' logo. There are several fishermen coming from several countries and all flights arrive between 15 and 16:00. Once all guests have arrived, the journey continues from here by coach at 17.00 hours local time. Halfway there will be a stop where you can buy some food and drinks.

The drive takes about 6 to 7 hours depending on the weather and you will arrive at the location around midnight.



The accommodation:

Sudureyri

There are 5 different accommodations in two categories. They are called sailorhouse and captainshouse.

Sailorhouse apartments with 3 bedrooms with a total of 6 single beds, fully equipped kitchen with cooker, oven, coffee machine, fridge and living room with dining area

Captainshouse: new spacious apartments with 3 bedrooms with 2 single beds each, fully equipped kitchen with cooker, oven, coffee machine, fridge and living room with dining and sitting area, washing machine, dryer and dishwasher.



The distance to the boats are 200 to 300 meters. Guidance on site is provided by the Icelandic staff who is German and English speaking and will support you with the choice of materials, the best fishing spots, boat instructions and other questions.

Flateyri

Here we have 9 beautiful accommodations in the category standard. These are spacious Canadian-style houses with 6 single beds each, fully equipped kitchen with stove, oven, microwave, coffee maker, refrigerator and living room with dining area.



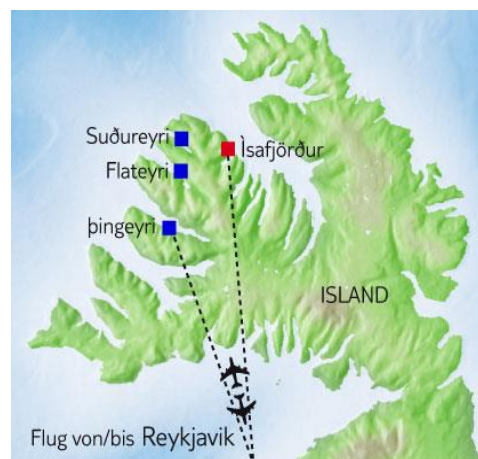
Distances to the boat: are 100 to 150 meters. Also here you can reach a small supermarket in just a few walking minutes. The houses include bed linen and towels, electricity and water costs and final cleaning.

At the location:

On your first morning an extensive explanation will be given about the boat and its operation and about the routine regarding fish processing in Iceland. In this way it is ensured that the delivered fish is treated and processed in the best possible way.



Iceland



Flying route to Westfjord (Isafjörður)

A solution is currently being worked on whereby starter boxes can be ordered from the supermarket so that breakfast and a meal are available for the first day. At a later date, you can then take one of the local hire cars to Isafjörður for other shopping. Check with the local guide for opening hours before driving there. We will inform participants as soon as more is known about this.



In Flateri, there are 5 and in Sudureyri 3 rental cars at the disposal of the guests present there. You can book these for a period of 4 hours on the spot with the local guides. With these you can then do the booo shopping in Isafjordur. This saves costs and doesn't make it more expensive unnecessarily.

Bringing fish:

From 2025, there are some new options here.

1. Fillet max 30 kg yourself
2. Have it filleted for you
3. Order ready-made and take away
4. Order ready-made and have it delivered to your home

From 2025, it will be possible to fillet your own fish on site. You can then take a maximum of 30 kilos of filleted fish with you. Filleting tables and freezer boxes are available to process the fish neatly. Please note that this should fit in your regular luggage or that you should already book a separate extra suitcase for the return journey.

You can also drop off your fish at the local fish factory and have it filleted there for 60.

As before, it is also possible to order a ready-made freezer box with 20 kilos of fillets. This will then be ready when you leave your hotel in Hotel Reykjavik and will cost €245.

The very last option is to order a box of fish and have it delivered to your home. For this, all orders are sent together at the end of the season and the package is delivered to your home. This costs € 295 per box of 20 kilos.





Package: choose your 4, 7, 10 or 14 day fishing trip to Iceland

- Return bus transfer from the airport to the location in the Westfjords including dinner
- Shared rental car (to be reserved on site for your own use for shopping)
- 3-star hotel in Reykjavik, overnight on the basis of double, triple or quadruple room and breakfast on return 1 night
- Comfortable holiday home including bed linen, towel, water, electricity and final cleaning
- 6 days spacious fishing boat, 130 hp diesel, fishfinder, gps, VHF radio and sea chart
- Bring up to 30 kg of self-caught ne filleted fish
- Local guidance by fishing guide
- Free facility to take the 'sailing licence test

Additional costs

- Return flight to Kevlavik: Icelandair with 1 x 23 kilo luggage or more by agreement + 10 kilo hand luggage
- Fuel for the boat and rental car

You can additionally book the following:

- Fishing overalls € 50
- Fishing rod and reel with line € 50,- each
- Gaf € 15,- per week
- Guide half day € 150 per 4 hours
- Guide full day € 300 per 8 hours
- Extra night in hotel in Reykjavik € 100,- per person

If you wish, you must indicate this directly when booking.





Prices: 2025

Seasons on departure date

season 1 from arrival date 22.04 - 29.04.2025 and 02.09 - 23.09.2025

Season 2 as of 02.05 - 29.08.2025

price per person

Season 1	nights	2 pers	3 pers	4 pers	5 pers
Sailorhouse	4	1290	1105	1015	960
Captainhouse	4	1390	1175	1065	1000
Sailorhouse	7	1705	1385	1220	1125
Captainhouse	7	1880	1505	1310	1195
Sailorhouse	10	2120	1660	1325	1290
Captainhouse	10	2370	1830	1450	1390
Sailorhouse	14	2670	2030	1705	1510
Captainhouse	14	2265	2265	1880	1650

Season 2	nights	2 pers	3 pers	4 pers	5 pers
Sailorhouse	4	1690	1375	1215	1120
Captainhouse	4	1789	1438	1263	1158
Sailorhouse	7	2405	1850	1570	1405
Captainhouse	7	2580	1965	1660	1475
Sailorhouse	10	3120	2325	1485	1690
Captainhouse	10	3370	2495	2260	1790
Sailorhouse	14	4070	2960	2405	2070
Captainhouse	14	4420	3195	2580	2210

Note the special price for 10 days in season 2 if you book 10 days with 4 people!

Our locations are 5 (Sudureyri) to 15 (Flateryi) minutes by boat from the open sea. This is an interesting difference from other providers of fishing trips to Iceland. With us, it ends up costing significantly less time, diesel and therefore money to reach the fishing grounds.

less sailing time = less diesel = more fishing time = more value for money

It is also possible to drive with a rental car directly from the airport in Reykjavik with your own group to your location and not join the tour bus. Depending on the size of the group, we will book a rental car for you and these costs will be additional.

For boats, there are two options on site:

1. a deposit is required by credit card with a reservation of €1,000. This reservation on the credit card will be lifted after returning the boat in good order. Should there be any damage you will have to pay it.
2. you pay € 75 per person and the boat is fully insured.



Fishing method:

Cod:

The "smaller" fish of 3 to 8 kilos are actually caught everywhere and to a large extent with pilks and gummi-makks. During our own trips there were no dominant colors that worked better than others. The fish weren't picky and actually took all the bait that was offered.

If you want to fish large species, we strongly advise you to use large bait. Do not be afraid to use coalfish or haddock of 2 to 3 pounds. Only in this way you have a good chance of avoiding the large amount of "smaller" species. For this type of fishing, use a system with two single hooks of 10 or 12/0. A hook is attached near the head of the baitfish and a hook near the tail. For this fishing we advise to use a 20 - 30 lbs rod and lead weights up to 400 g because of the chance of (large) halibut.



Halibut:

Taking in halibut is officially not allowed in Iceland for hobby anglers, but if a halibut violates your bait it is of course unavoidable. Halibut is a bycatch here and if you want to fish halibut, Norway has the better locations. Nevertheless, they are also found here and a number of halibut are actually caught per season. If you accidentally hook a halibut you have to put it back no matter what condition it is in according to Icelandic law.



Wolf fish:

For this fish you absolutely have to look for slowly descending bottom structure preferably with rocks on it. The coastal "corners" of the fjords are good places for this. These kind of spots are abundant in both Sudureyri and Flateyri. The depths vary per season from about 15 metres in early spring to a maximum of 50 metres closer to summer. By the way, spring and beginning of summer are the better seasons, but they are caught throughout the season. For this fishing use smaller hooks from 6 to 8/0 on which a piece of fish on it. Mount all this on a relatively short leader of 0.8 to 1 mm and let it bounce to the bottom every third second to annoy the fish and trigger a strike.



Clothing:

We advise you to bring the following clothing.

A good thermo or floatation suit. Fleece or thermo underwear, thick socks and warm boots. Preferably no rubber boots but better Gore Tex hiking boots. Also sunglasses and cap. Sun lotion can also apply.



Fishing spots:

Sudureyri:

Prepare for average water depths of 15 to 50 metres, and occasionally 100 metres. This does not mean that only light equipment can be used for fishing. The current, especially outside the fjord, does not allow fishing with weights of less than 200 grams. Only in the relatively short "dead tide" period the current decreases to zero. This is the time to focus on the wolf fish. This "slow" bottom dweller likes slow bait offered directly above the bottom like natural bait or medium sized pilk, jig or shad.

As soon as the current kicks back in, the strikes from the wolf fish will become significantly less and the time for the cod and halibut starts again. Large shads equipped with strong split rings bring out the largest fish. Also the usual pilks and jigs brought fish of more than 50 pounds, but significantly better was the large shad or entire baitfish.

A special spot in the already unsurpassed area is the "lighthouse bay" north of Sudureyri. At the exit of the Sugandafjord keep to the right with a northerly course towards the fjord exit of the giant Isarfjardardjup. After you have passed the rugged coast of the yellow lighthouse you will find a spacious bay, where in recent seasons our guests have landed large numbers of large wolf fish and cod weighing 25 kilos +.

Cod migrate here in giant shoals in search of food across the sandy plateau and it is not always easy to catch the larger specimens. It helps to make long drifts and to fish with large baitfish. Then the specimens of 15 kilos + eventually will come into play.

Wolf fish can be found in large numbers, especially in May and June. Good spots are the mussel beds at a depth of about 30 m in the middle of the fjord exit for Sudureyri, the southwest land point "Saudanes" and also the already described "lighthouse bay". During the summer period you will find huge schools of pollock with an average weight of 4 to 6 pounds. However, the bigger siblings of more than 10 pounds are also present here.

The narrow fjord of Sudureyri cuts deep into the mountain massif and points the way to one of the best fishing areas in Europe. The fjord exit is only 1 mile away so you can get here fast with the big and safe boats. The fjord itself is fairly flat with depths of 6 to 15 meters and has a sandy bottom where the flatfish flourish. These can even be caught from the boat jetty. So after a long day at sea it is easy to cast another rod in the harbour with a good chance of beautiful flatfish. Don't forget to offer a small pilk / jig with light equipment to tempt a cod or coalfish as well.

It is not possible to sail deeper into the fjord than the harbour itself as there is a sandbank in the middle of the fjord directly behind the harbour which makes passage impossible.

Flateyri:

This area is very similar to the Sudureyri area. It is separated only by the high mountain range and land point of Saudanes. Behind Flateyri, towards the end of the fjord, large sandbanks stretch from 9 to 15 metres where it is teeming with flatfish. With the right paternoster and some fish pieces, beautiful and tasty specimens can be caught from the drifting boat. Be careful when navigating this area because there are many shallows and sandbanks.

The fjord at Flateyri can be fished in almost any weather and has produced beautiful fish in recent seasons. Especially the wolf fish enthusiasts will find plenty of opportunities here. By fishing with natural bait in depths of 20 to 30 metres, wolf fish weighing 10 kilos and more are no exception. Especially the land point Saudanes is a hotspot for this fishery. The bottom offers a lot of structure here, so you also have to take into account the loss of some leaders and jigs. But every fisherman who has fished for this species before knows that this is the risk of this type of fishing.

The sandbank, already mentioned several times, is a very important spot in this area. It's 12 miles long and 4 miles wide and runs parallel to shore. North of Sudureyri, the plateau descends into the depths of the Isafjardurjup. To the south, the sandbank is bordered at Flateyri. The average depth here is around 30 to 45 meters and has a fine sandy bottom that alternates with mussel beds and gravel. This combination provides the particularly favourable conditions that make fishing here so special.

Monkfish are also regularly caught from July to September. These fish were also caught relatively close to the shore. Most of them in the Örnundarfjörður.



Beautiful flatfish



Monkfish of 38 pounds and a happy fisherman!

The large fjord in the middle of which Flateyri lies has an average depth of 20 meters. Here, too, flatfish can be fished from the boat jetty or harbour pier. This offers a nice change after a long day of "heavy" fishing at sea.

On the last evening in Flateyri there is also the possibility to participate in a traditional Icelandic Buffet for an amount of around € 50,- pp including traditional Icelandic lamb and whale. As an extra there is the "Icelandic Tequilla" (= Icelandic Breinnvín snaps, cured shark and Icelandic snuff tobacco). These additional costs can be settled on the spot with the restaurant owner by credit card or pin. PLEASE NOTE: the restaurant is closed at the beginning and at the end of the season. It is open from June to August and is called Vagninn.





The boats:

Length:	7.85m
Width:	2.85m
Engine:	Volvo Penta or Yanmar Turbodiesel injection with 130 hp
Fishfinder/GPS:	Garmin 298 (Combination module with color plotter and high resolution fishfinder)
Marine radio:	Raymarine Ray Radio (ship to ship communications)
Emergency transmitter:	CSB200 (combines the emergency signal with a direct connection to the rescue service in Reykjavik via GPS transmitter)
Bilge pump:	Rule 1500 GPH (fully automatic)
Deck pump:	with reel and pistol sprayer manual
Life raft:	1 x DSB LR97-IS for max. 4-6 persons Or 2 x Viking 4UKL for 4 max. 4 persons each
Cabin:	with seat and steering position, heats and seats 4-5 people
Diesel tank:	195 Liter
Fishing bun:	2 x 380 Liter with cover (sunken in the deck)
Heating:	Kalori Kuba 530 with 12 Volt (Cabinet Heating)
Batteries:	1 x for equipment on board and 1 x for starting the engine
Safety equipment:	includes: life raft, life jackets, emergency signals, smoke signals, First aid kit, etc
Fuel:	The ship's diesel costs about € 1.50 per litre in Iceland and is available directly in the ports of Sudureyri and Flateyri. Refuelling is done by the local service man/guide.



Top boats at almost 8 metres !



The fishing village Sudureyri in summer

Unfortunately, on the GPS equipment the pre-programmed waypoints are sometimes erased by "less experienced" guests. Please leave the basic setting as it is and only save new hotspots as waypoints.

The total number of persons per boat is legally limited to a maximum of 6 and a boating license is also required in Iceland! So if you have a license, bring it with you! If you don't have one you will have to do a test on the spot. This test is free of charge for our guests and you will have to try hard not to pass it. On the website www.plato.is you can find the test in different languages... with the answers! So how hard can it be? We didn't make it up ourselves but this is the reality. If you have to do this test, it will be on Wednesday morning after the safety drill.



Material:

The equipment below is based on personal experience and contains, in our opinion, the most necessary equipment.

- Rods:
- Powerful 20 and or 30 lbs boat rods approx. 1,8 to 2,1 m
 - Medium pilker / rod casting weight approx. 250g, 2.4 - 2.7 m
 - Light pilker / sea rod casting weight approx. 80-150g, 2.4 - 2.7 m
- Reels:
- Strong reel (6000), with 500 m dyneema 20 kilos for halibut and large cod
 - Medium reel (5000), at least 300 m dyneema 20 kilos for cod and sea wolf
 - Reel (4000), seawater resistant, with 10 kilo dyneema for light fishing for cod, saithe, haddock, etc.
- Other:
- Pilks, 80 - 150 g, predominantly blue and silver
 - Pilks, 200 - 300 g, predominantly blue and silver
 - Large shads (20 + cm) with matching lead heads of 200 - 400 g
 - Lead of 200 - 400 g
 - Various Gummi-Makks
 - Various paternosters for haddock and coalfish
 - Swivels in different strengths and sizes up to 200 lbs
 - Single hooks of different sizes (2/0-12/0) for fishing with natural bait for flatfish, wolffish and halibut
 - Sturdy mono leaders (0.60 - 1.20mm)
 - Running Booms / zip gliders
 - Octopuses (luminescent) for fishing for wolf fish
 - Flatfish paternosters
 - Herring and mackerel paternoster (for bait fishing)
 - Pliers
 - Knife

Fishing with natural bait for wolf fish in depths of 15 to 25 meters and the medium pilk / jigging for cod in depths of 15 to 30 meters are promising and guaranteed to yield fish. The drifting fishing and jigging with heavy shads and fishing with large natural bait in depths of 20 to 50 meters has yielded the largest fish in recent seasons. Also try the drop off at the Isarfjord at depths of 80 to 100 meters here we found large schools of cod.



Giant spotted wolffish



Typical Iceland cod



Impressive drill



In both locations there is a small but specialized angling shop so that you don't have to bring all the equipment but you can buy it on the spot. Very handy! These shops provide much needed equipment for fishing large fish at sea. The smaller material for the fjord is good to bring yourself. If desired, fishing overalls and rods in the right weight class can also be rented for € 55,- and € 50,- respectively. These need to be ordered in advance and paid for on site.

To add extra value to the fishing trip, it is possible to book the local fishing guide for a day on your own boat. He will then take you directly to the best spots of that moment! The cost to have the guide on the boat for a whole day is € 350,-. The sooner you book, the sooner in your week he can come along on your boat! The costs for these additional items can be paid on the spot by credit card.

Extra safety per VHF:

We have agreed with the coastguard that all our boats in the Westfjord area are guarded. This is an extra piece of security. For this purpose one has to report to the coastguard of Isarfjörður on the emergency channel 16. The 4-digit boat code must be given when leaving and entering the port. This is done in English. This check-in and check-out must be confirmed by the Coast Guard. So wait for an answer.

Example: When leaving: "Hello Radio Isarfjörður, boat no. 7906 is leaving Sudureyri".
On entering: "Hello Radio Isarfjörður, boat no. 7906 is in Sudureyri again".

If you are fishing, it is possible that the coastguard calls you to ask for your GPS position. This will keep you in the view of the Coast Guard so that should it be necessary to rescue you quickly. All boats are also equipped with emergency AIS transmitters.

The contract for the use of the boat:

The user agreement has to be signed by the captain of the boat. Because a boat insurance a € 180,- for the week is already included so any excess cost are waived by this insurance.

Exception is damage to the propeller. In recent seasons a number of propellers have been damaged by reckless behaviour due to irresponsible manoeuvring in port. In case of damage to the propeller, the Icelandic owner reserves the right to demand an amount of € 450,- to replace the damaged propeller. Therefore, please check the propeller of the boat together with the staff on the spot before your first departure. Do this again after the last fishing day.



The catch and it's processing

The Icelanders are extremely careful with their fish stocks. Every fish caught and landed is processed in a sensible way.

Initially, you fish at depths of up to 50 or 60 metres. If you gently drill the fish up and give it time to empty the air bladder, the fish can practically always be put back. Fish that are damaged can be put on ice and taken along in the boat. There they are put in the boxes in a mixture of cold water and ice. Because of this cooling any worms go to the warmest place of the body and in this process that is the liver. Thus, any worms are out of the fillet after 24 hours. The fish that is brought along has to be cut at the throat to start this process. Cut across just behind the gills. The fish may not be gutted, otherwise the process by which the highest quality fillet is achieved is disrupted. If you want to take pictures, do so before cutting the throat because then the fish looks way better.

So you fish on the quota of the fish factory and on the spot you are asked to bring all the fish you catch. We usually put back the good fish back and only the badly hooked or injured fish are used for the fish factory. Every day between 09.00 and 11.00 hours the caught fish can be delivered to the fish factory.

From 2025, there are a number of new opportunities here.

1. Fillet max 30 kg yourself
2. Have it filleted for you
3. Order ready-made and take away
4. Order ready-made and have it delivered to your home

If you have ordered a box of ready-to-eat fish, it is 20 kilos and you will receive it when you leave your hotel from Reykjavik on the last day. These professionally processed fillets are frozen at -18°C and this service ensures that you do not have to fillet them yourself. The package of fish is completely ready for the return journey. The fish is already packed frozen in a transport-safe thermo box to which only the sticker with destination needs to be affixed. The quantity of fish is generally divided among the following species: catfish, cod and coalfish. The distribution depends on the season.



2 kg fish with single packed filets



thermo bag with 20 kilo fish



2 kg unit



If, in spite of this thermobag with fish, you still want to fillet fish yourself for a tasty meal that same day, you can do so on board the boats on large plastic cover plates of the fish bun. The fish waste has to be disposed outside in the fjord in open water.



Halibut of 350 lbs.



Wolf fish of 22 lbs.



Cod of 62 lbs.



Happy fisherman



The returntrip from the Westfjords:

On Tuesday end of the morning, you will depart by coach back to Reykjavik. After the 6-hour drive, you will be dropped off at the hotel in Reykjavik where a room has been booked for julklie group.

For those who want to book the extra Wednesday in Reykjavik, there are several options to fill in this last holiday day. City tour in Reykjavik, visit (with swimming trunks) the hot springs and geysers of Reykjavik called 'Blue Lagoon', a tour called 'Golden Circle' with visit to the geysers, the waterfall Gullfoss, national park Thingvellir and other sights. Our on-site staff will inform you about the exact details and prices, allowing you to discover Iceland without a fishing rod for a change.

Tip: Visiting the nightlife is not the most favourable way to spend an evening at the pub due to the rather high alcohol prices in bars and restaurants. However, the amount of cosy pubs and bars close together in central Reykjavik and the friendly people do make an evening stroll with a drink or two well worthwhile.

As the flight back is early, there is no standard breakfast available on the morning of departure. Ask for a grab-and-run box the evening/afternoon before and it will be ready on the morning of departure, so you still get breakfast.



On departure day, it is important to get up on time because of the morning flight. The thermo bags containing the 20 kilos of fish will be distributed at the hotel on the morning before departure. This way, the fish will stay frozen as well and as long as possible.





ADDITIONAL EXCURSIONS from Reykjavik (to be booked locally)

Here you will find an overview of possible activities you can plan during your last (wednes) day in Reykjavik. The prices are an indication and may vary on the spot.

A. Trip to the Blue Lagoon Price pp € 150,-

A ride through the lava fields of the Reykjanes peninsula to the rare and world famous natural phenomenon of the Blue Lagoon. On site you will have the opportunity to swim in the warm and geothermal bath in the open air with geosauna, waterfall, etc. This is a soothing final on the island of fire and ice.

B. The golden circle, geysers and waterfalls Price pp € 100,-

Over the mountain range Hellisheidi we arrive at the south coast at the town of Hveragerdi, where the greenhouses are powered by geothermal energy. Here the local flowers and vegetables of Iceland are grown. Then on to the high temperature area of Haukadalur with the very active source Strokkur and "the big geyser" after which all geysers in the world are named. The active geyser shoots a fountain of 15 to 25 metres into the air every 10 minutes. A real challenge for the photographers. Just a few kilometres away is the Gullfoss, the famous "golden waterfall" that plunges into the valley in several levels. This is regularly accompanied by the appearance of the rainbow. It is fed by the glacier river Hvitra and is considered one of the most beautiful waterfalls in the country. On the way back to Reykjavik, a visit is made to the Thingvellir National Park, which is very interesting both from a geological and historical point of view. This is where the first democratic parliament was founded in the 1930s and where the Eurasian and American continental plates split up which you can actually see. The bus tour has an English tour guide and takes about 6 hours.

C. Whale spotting Price pp € 100 (excluding transfer 500 ISK pp)

An unforgettable adventure with a great chance of seeing whales, dolphins, puffins and birds in the bay of Faxaflói. From June every day at 9 am, 1 pm and 5 pm and from July at 10 am and 2 pm. And the trip takes about 3 hours. English is also spoken.

D. Rental car Price from € 250,- per day

Some Icelandic natural phenomena are just a day's tour from Reykjavik. In order to visit these we offer you the possibility to rent a car. Please note: The cost of gasoline is not included and there is an additional charge if the car is delivered to the hotel. Car, map, unlimited mileage, all risk insurance and VAT.

All day trips can be booked upon arrival in Iceland or during the stay in the Westfjords. However, trips must be booked 2 days before departure. Payment cash in Euros or by credit card (VISA/Master). Due to organisational reasons the booking has to be done until Sunday afternoon 17.00 hrs. Please report to our local employee / guide and indicate which day trip you would like to schedule. Payment and handling will be done entirely on the spot. If there are not enough participants for certain activities we are unfortunately forced to cancel the trip.



Luggage:

With Icelandair we can book extra baggage for you if you can't make do with the standard amount of 23 kilos per person and 10 kilos of hand baggage. We will discuss this with you in the quotation process based on your wishes. Extra luggage costs €70 for a one-way flight and €140 for a return trip.

Do not put knives, hooks, reels, pliers and other fishing accessories in your hand luggage. Put them in your regular suitcase. The hand luggage can be taken additionally to the total weight. The hand baggage may weigh 8 kilos and must fall within the dimensions of the airline in question.

All airlines are looking for additional income. Every extra rod case or suitcase that falls outside the regular package of 2 x 23 kilos can be paid separately. Please note that you will have to pay these costs yourself at the airport by credit card. The maximum length of the rod holder / tube is 2 metres.

Attention: After arriving at the Keflavik international airport of Iceland, you first need to pick up all your luggage from the luggage belt. Then report to the local contact person and you can bring your luggage to the coach. Note; you can also buy beer or other alcoholic drinks at the airport immediately on arrival. This is more convenient and less expensive than having to buy it at the state shop in Isafjordur.





Other:

Alcohol and tobacco

Alcoholic beverages are quite expensive because of the high taxes in the northern countries. If someone wants to have a drink during his holiday in Iceland, we advise you to buy Keflavik tax-free upon arrival at the airport. Buying drinks is allowed from the age of 20. For the regular import of drinks and cigarettes you can visit this website: <https://www.tollur.is/english>.

Messages

Groceries can be found in the small supermarket on the spot where prices are generally slightly higher compared to Europe. You can bring a maximum of 3 kilos of food up to a value of ISK 4,000. Milk products, eggs, fresh or smoked meat may not be imported. Meat is allowed in cooked and preserved form (canned) and in the original packaging. Beloved foods are therefore pasta, ready-made soups, etc. Attention: the import of these items is strictly controlled!

Beloved souvenirs from Iceland are mainly wool articles such as the famous Icelandic sweater. These prices are usually above ISK 5.000,-. Therefore pay attention at your purchases on the "tax free" sign. From ISK 5.000,- on departure from Iceland 15 % tax will be refunded. You have to apply for this yourself and it is not automatic.

Eating out

The menu of the restaurant where you want to eat in advance is definitely worth studying. The price differences can be quite large, but also the diversity of dishes such as puffin, sheeps head, lam, cured Icelandic shark and stockfish is not for everyone. The most favorable menus are the tourist menus, which are usually served in the afternoon. The restaurant in Flateyri is open from June to August.

Tips

The final price in Iceland includes VAT and service so tips are not necessary. It goes without saying that they are gladly accepted.

Photography

Be careful with your camera in certain places. Fine dust, water splashing at waterfalls, and sulfur gases can adversely affect the devices.

Money

It is not recommended to change euros into ISK at home. After arrival in Keflavik it is possible to change or withdraw cash directly on the spot. These ATMs can be found in all larger neighbourhoods. The use of a credit card is standard everywhere, so you will be able to use this as well.



Weather

A well-known Icelandic saying is: If you don't like the weather, just wait. Indeed, the weather here can change quickly and drastically. Therefore, before departing by boat, let the local staff inform you about the latest weather forecasts. During the summer period this can also be requested by telephone in English. Rain is not an unusual guest in Iceland. Therefore, please bring appropriate water and wind resistant clothing.

Time

In summer the clock has to go back 2 hours and in winter it has to go back 1 hour. In winter it is only a limited number of hours of light while in summer there is little night.

Rental car

A rental car is available on site. This is included in the price and the driver must have a valid driver's license and a credit card in his/her own name. This car is meant to be able to go shopping on the spot in the greeter Isafjordur or on a free day to explore the region.

Travel formalities

For travelling to Iceland, a valid passport is sufficient. This allows you to stay in Iceland for a maximum of 3 months.

Electricity

The voltage in Iceland is 220 V and 50 HZ AC. The plugs used here are therefore the same as in Europe. An additional power strip is usefull to charge several devices at once.

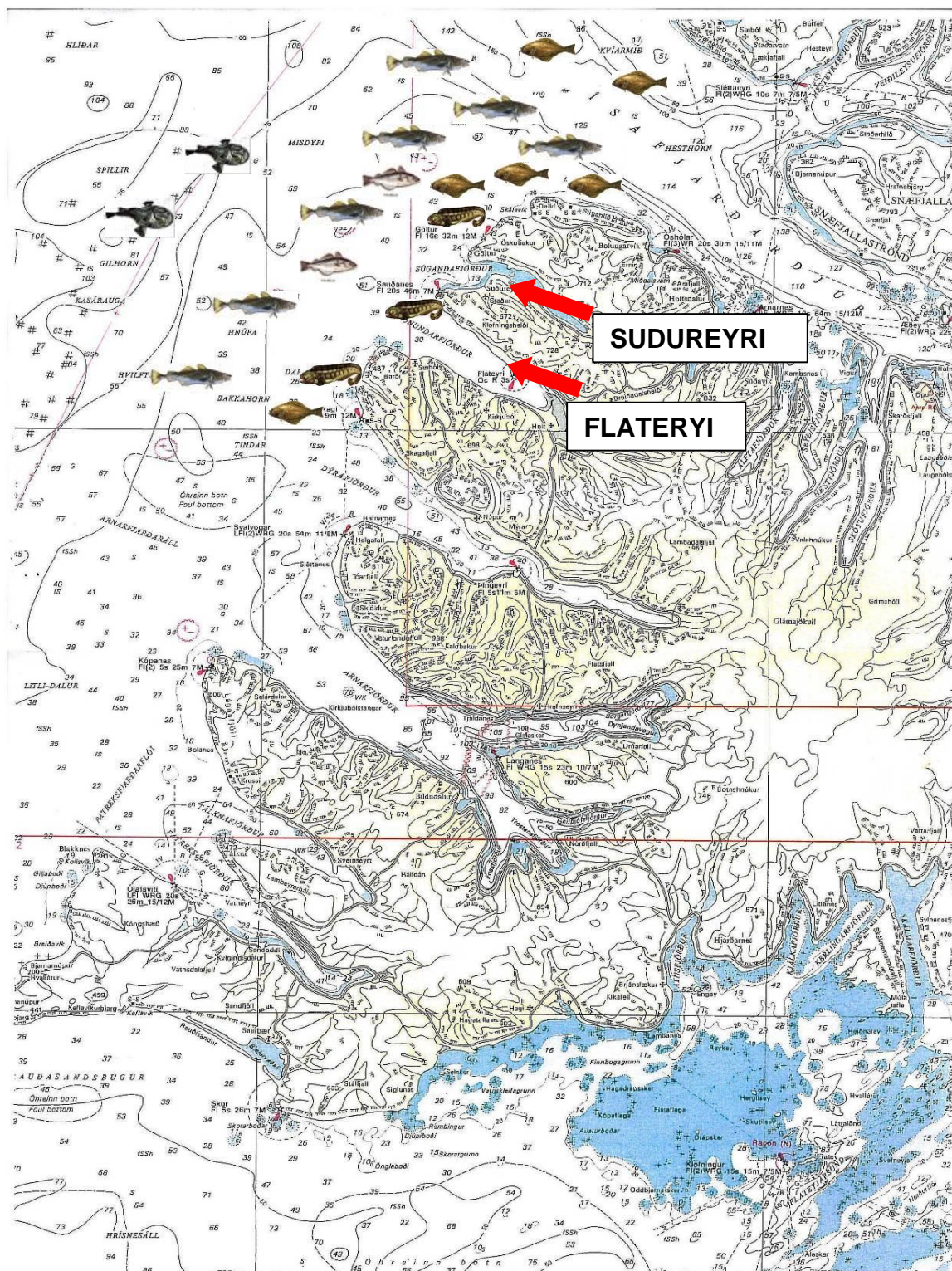
Travel insurance

We advise every traveller or traveling fisherman who goes abroad to arrange a good travel insurance. These costs are way less when you really need it when an undesirable event should arise. For any questions we will be happy to provide you with information or the necessary travel / cancellation insurance.

Would you like to inquire about the availability of this trip or would you like an offer, please contact us:

Worldsbestfishingtrips.com
Joe Nieuwenhoff
's Gravensloot 39
3471 BP Kamerik
The Netherlands
E-mail : mail@worldsbestfishingtrips.com
Tel : 0031 – 348 702 620
(CET from 9 to 18.00 hours)





Wolf fish



Halibut



Monkfish



Haddock



Cod